

Wireless Presentation Gateway WPG-100 Quick Installation Guide

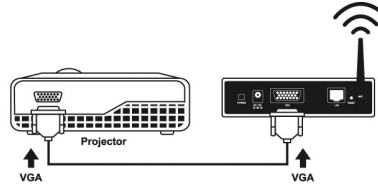
Version 1.0

Thanks for your purchase our wireless presentation gateway. WPG-100 is an easy installation, convenient operation and user friendly projecting device. It turns your current Projector into a high-end Projector. With the WPG-100 your Projector become a wireless device and PC/Notebooks will be easier to project screen to Projector. Package Content

- 1 x WPG-100
- 1 x CD Disk (User's Guide included)
- 5V DC Power adapter
- Quick Installation Guide
- Wall mount kit

Quick Start

- 1) Connect projector VGA cable to WPG-100 box VGA connector and turn on projector power.



- 2) Turn on WPG-100.

- When Projector shows the default menu on the screen as below, it indicates the WPG-100 is ready now.

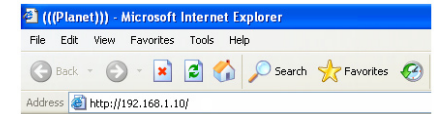


- 3) Make sure your PC LAN port or WLAN interface is enabled already, and connect your PC with WPG-100 (wireless default SSID is WPG-100).

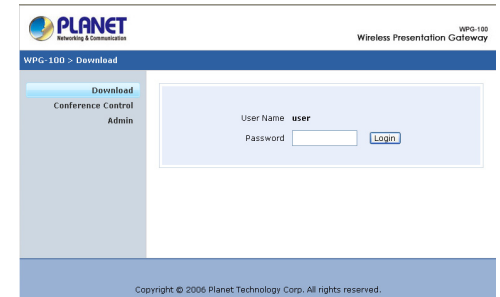
- 4) Open your browser and enter the WPG-100 IP address to get in WPG-100 web home page.



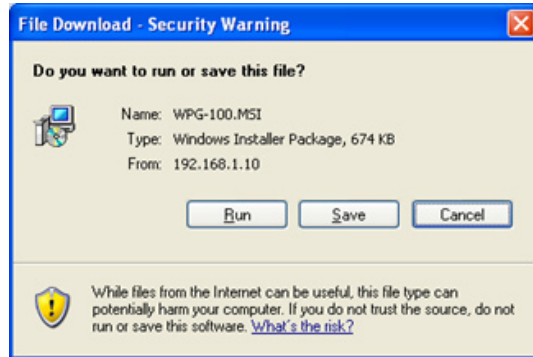
- The default IP address of WPG-100 is 192.168.1.10. If you have modified the IP address, you can refer to the IP address shown on the left-down corner of projector screen.



- 5) Please select "Download" option and press "Login" button. The Password is empty.




6) You will see a file download dialog box appear, press "Run" to execute the installation program.



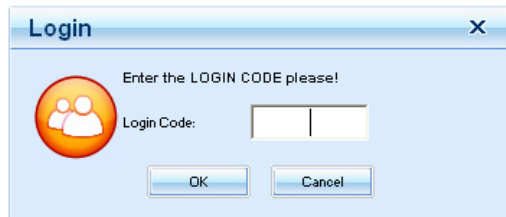
10) Click the "Play" button to start projection!



7) After install the program, WPG-100 shortcut  will come out on the desktop.

8) If there is any firewall, please make sure your personal firewall has allow WPG-100 software to pass through.

9) Enter the LOGIN CODE and press "OK".



• You can see the login code on the projector screen